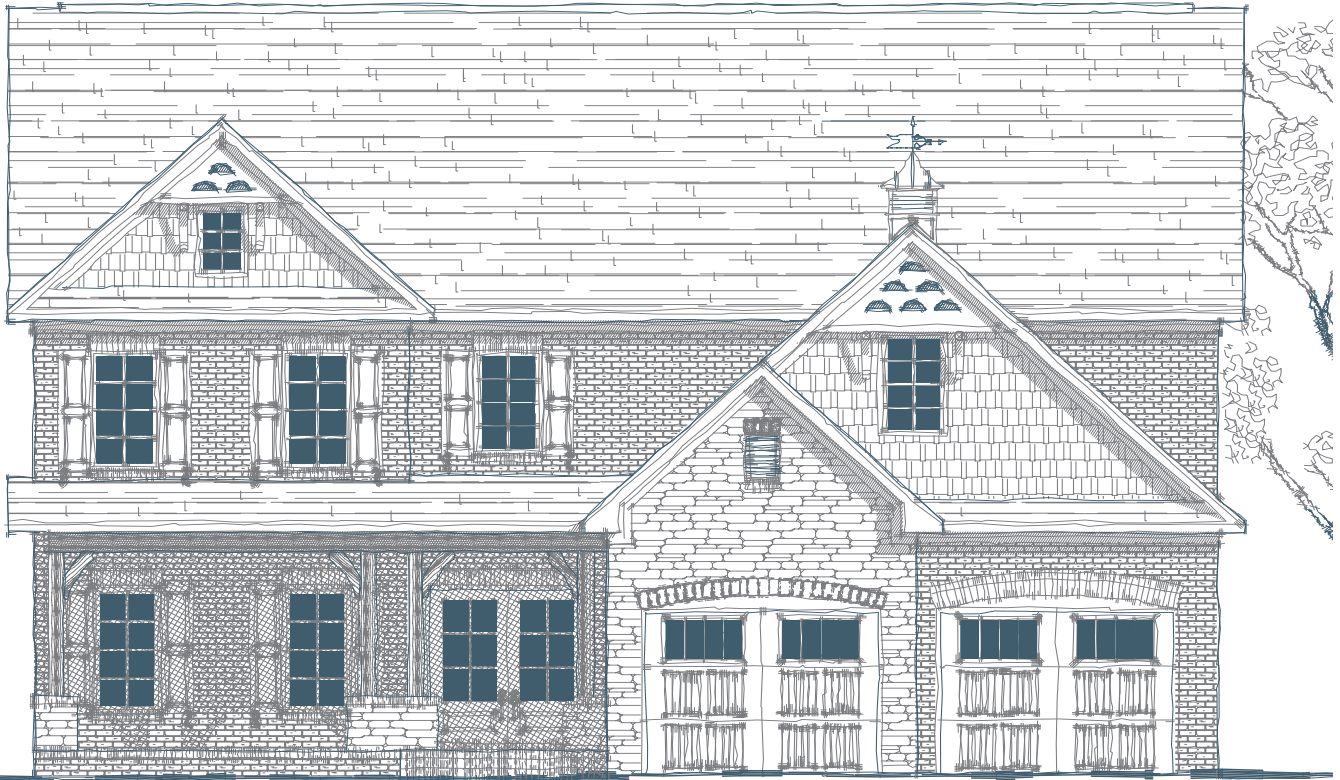


HUNTINGTON CLASSIC



ISENHOUR
HOMES



Specs:

| | |
|-----------------|------------------------|
| Bedrooms: | 3 (Opt. 4) |
| Bathrooms: | 3 |
| Square Footage: | 3,131 ft. ² |
| First Level: | 1,336 ft. ² |
| Second Level: | 1,795 ft. ² |
| Width: | 45'-10" |
| Depth: | 45'-11" |

Options Shown:

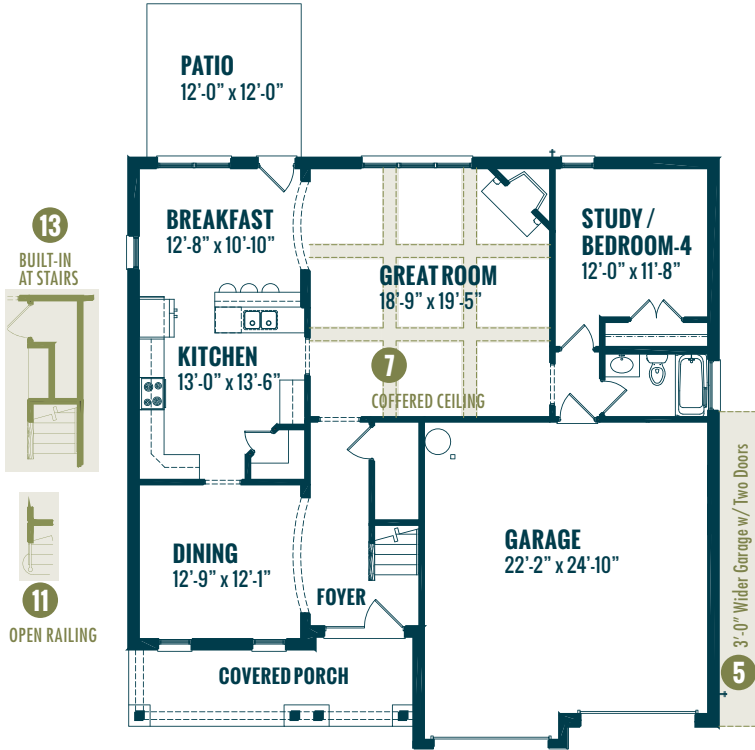
- 1 Screened in Porch
- 2 Sunroom - Adds 168 Sq. Ft.
- 3 Covered Porch
- 4 Sunroom "B" - Adds 240 Sq. Ft.
- 5 3'-0" Wider Garage w/ Two Doors
- 6 Attic Storage - Adds 630 Sq. Ft.
- 7 Coffered Ceiling
- 8 Tray Ceiling
- 9 9'-0" Ceiling Height
- 10 Double Vanity
- 11 Open Railing - First Floor
- 12 Open Railing - Second Floor
- 13 Built-Ins at Stairs
- 14 Metal Roof

11/07/2016

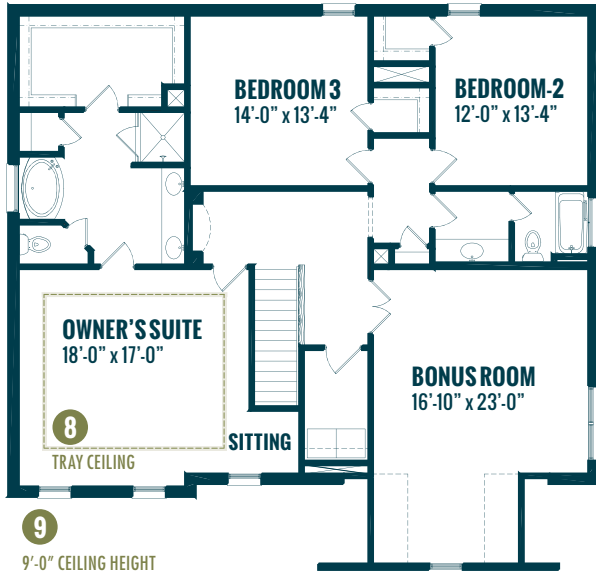
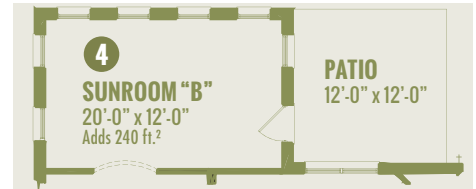
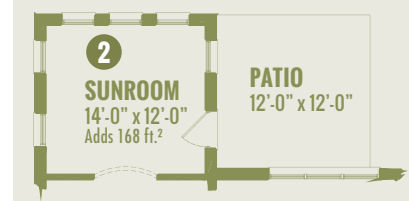
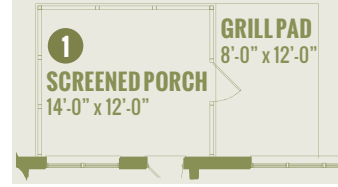


Watercolors, illustrations, and floor plans shown are for marketing purposes only and are subject to change at builder's discretion. Square footage is outside veneer and should be independently verified. This is not a legal document.

3411 HEALY DRIVE, SUITE A, WINSTON-SALEM, NC 27103 | 336.659.8211 | ISENHOURHOMES.COM
4330 SOUTHPORT SUPPLY ROAD, SUITE 101, SOUTHPORT, NC 28461 | 910.363.1620



FIRST FLOOR



SECOND FLOOR

